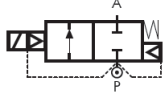


## LD266 Series, General Purpose – 2/2 Normally Closed, Latching

Specifications	
Function (single acting)	 <p>Flow direction overseat 1 → 2</p>
Maximum Viscosity	Max. 21cST (3 °E)
Body Material (Std)	Brass CW617N (EN 12165)
Flange <sup>1</sup>	Stainless Steel 1.4305 EN 10088 (AISI 303)
Tube	Stainless Steel AISI 304
Plunger	Brass CW614N (EN 12164)
Magnet	Neodym-Iron-Boron
Top Stop	Stainless Steel 1.4105 EN 10088 (AISI 430F)
Springs	Stainless Steel AISI 302
Seal Material (Std)	NBR
Connection Type (Std)	G parallel thread (ISO 228-1)
Shading Ring	Copper
Electrical Characteristics	
Standard Coil Voltage DC (=)	6 V
Voltage Tolerance	+10% to -5% (DC)
Duty Cycle	100% ED
Protection Class	IP65 (EN 60529) with plug and gasket correctly fitted *
Electrical Connection	to EN 175301 - 803 - A (ex DIN 43650)
Coil Insulation	Class H 180 °C
Power Rating (Standard)	DC 6 W <sup>2</sup>

### Features and Benefits

- Pilot operated, latching
- Robust construction for industrial applications
- Stainless steel AISI 430F operators with low residual magnetism
- Coils tested 100% in compliance to RoHS directive and to relevant international standards
- Valve tested with supply set of 8 batteries type AA REACH 28.000 cycles (refer to batteries life time, after that batteries need to be replaced)
- Choice of high quality seal materials
- Pulse time 20 to 50 ms



Pipe Size	Cv (gpm)	Kv (m <sup>3</sup> /h)	OPD (bar)		Orifice (mm)	Seal Material	Valve Code <sup>2</sup>
			AC Voltages	DC Voltages			
½"	1.76	1.50	-	0.1 - 5	10.5	NBR FKM EPDM	LD266DBU LD266DVU LD264DEU

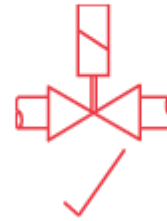
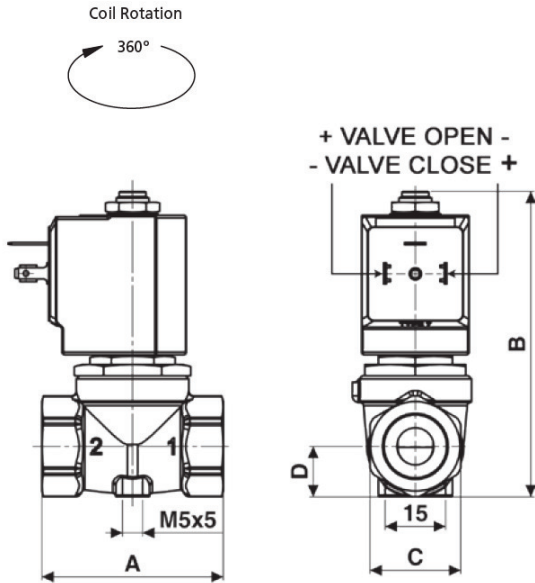
<sup>2</sup> Non standard, MOQ required.

### Options Available

Seal Material <sup>1</sup> and Media Temperature Range	Media	Ambient Temperature Range	
		Min	Max
NBR (-10 °C to +90 °C)	Water, oil, air	-10 °C	+50 °C
FKM (-10 °C to +130 °C)	Water, oil, air	-10 °C	+50 °C
EPDM (-10 °C to +120 °C)	Water, hot water	-10 °C	+50 °C

<sup>1</sup> See corrosion reference guide and sealing solutions for material compatibility.

## Preferred Valve Mounting Options



Pipe Size	A	B	C	D	Weight (kg)
½"	54	89	HEX 27	15	0.4

Dimensions (mm)

### Solenoid enclosures

#### 70T1 Type Coil - Insulation class H

- External material: PPS (glass fiber & mineral filled)
- Electrical connection: DIN EN 175301-803 form A
- Winding insulation: Class H (E180)
- Enclosure classification: Conforms to IP65 (according to EN 60529) with plug and gasket correctly fitted\*



#### Type 600 011- Plug

- Rated Voltage (max.): 250 VAC / 300 VDC
- Nominal Current: 10A (rated) / 16A (max)
- Wire cross-section: 1.5 mm<sup>2</sup> max
- Cable Entry: PG9 (6 to 8 mm)
- Enclosure classification: Conforms to IP65 (according to EN 60529) with supplied gasket
- Insulation class: group C- VDE 0110
- Housing colour: black
- UL approved, file No: E205538



### Coding chart

#### Main Valve Assembly

#### Coil options

#### Plug

Main Valve Assembly					Seals		Option		Voltage / Frequency - Class H				Plug	
LD	2	6	6	D	B	NBR	w/o option	70T1	6	VDC	0A1	w/o plug		
					V	FKM						c/w plug		
					E	EPDM								

### Product coding example:

LD266DVU 70T1  
½" G, auto operation, brass body, FKM seals, 10.5 mm orifice, 6 VDC, without plug.