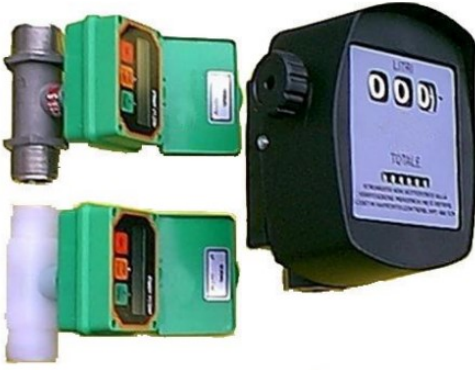


# Water Meters

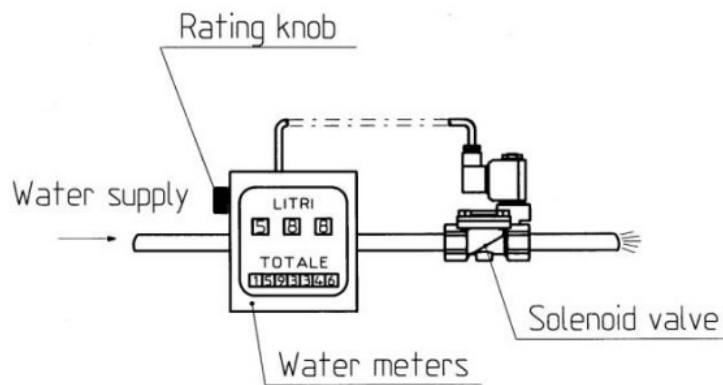
*Water Meters*



Water meters are electromechanical appliances allowing the supply of a predefined quantity of water to an equipment placed below. Applications are various; the most important is in the food industry. In ovens for baking bread or pasta water meters are used to supply the exact quantity of water when the dough is kneaded. Water meters are equipped with analogue or digital readers.

# Construction Diagram Of The System

*Construction Diagram Of The System*



# Solenoid Valve Application

*Solenoid Valve Application*

The water meter has the function to measure the quantity of a liquid flowing through it. A predefined rating is set by using a knot: when it is reached, the water meter sends an electric signal to the solenoid valve placed below, which closes, thus stopping the supply of the liquid.

# Solenoid Valves Used

*Solenoid Valves Used*



**TYPE B203/204/205**  
2/2 way NC pilot operated solenoid valve with series 2 coils

# We Recommend

*We Recommend*

Solenoid valves for this application are usually pilot operated, in order to have a larger flow rate. When water is not taken from the water system but from a tank, the pressure is very low and therefore it is necessary to make use of pilot operated solenoid valves with assisted lift, which work with minimum working pressure equal to zero.